

AFL HYPERSCALE.

White Label
Product Overview



Contents

03

About AFL Hyperscale

04

Assemblies

Patch Cords

Standard Grade Pigtailed

08

Protection and Management

1RU Sliding Patch Panel

Sliding Patch Panel Chassis

LGX 3RU Fixed Housing

LGX S13 1RU Sliding Patch Panel

LGX F19 1RU Fixed Patch Panel

LGX MPO Cassette BASE-12

LGX Wall Boxes

LGX Adapter Plate

Blank Panels

Cable Bars

1RU Brush Strip

1RU Cable Bar with 74mm Hoop

17

Wall Boxes

W31 Indoor/Outdoor Lockable Wall Box

W23 Indoor/Outdoor Distribution Box

W24 Indoor/Outdoor Distribution Box

W35 Indoor/Outdoor Lockable Wall Box

W37 IP65 Indoor/Outdoor Distribution Box

Din Rail Demarcation Box

20

Outside Enclosures

OSP Splice Box Compact Closure

Inline Enclosure

Dome Enclosures 01-04

Dome Enclosures 05-09

22

Accessories

Cable Management Kit

Splice Cassette with Clear Lid

Optical Fiber Fusion Splice Protectors

Splice Tray Hinge

Front-Mounted Quick Nut

24

Media Converters

Unmanaged Media Converter Chassis

Ethernet Fiber Media Converter 10/100 Mbps

Gigabit Media Converter 10/100/1000 Mbps

Multimode to Single-Mode Media Converter

AFL HYPERSCALE.

Welcome to the AFL Hyperscale White Label Product Overview.

To offer maximum flexibility to our customers, enclosed is a selected range of our products which we are able to supply without AFL Hyperscale branding and in plain packaging.

Cabling and Connectivity Experts



Multilingual Support



Excellent Value



Product Availability



Product Innovation

AFL Hyperscale is a leading designer and manufacturer of cabling and connectivity products and solutions with a portfolio including fiber optic and copper cabling, patch cords and pigtailed, cable management solutions, tools, consumables, and test and measurement equipment. This broad product offering, teamed with local warehousing and manufacturing and world-class customer service, means we can deliver the product you need, when you need it.

With 70 years' experience and an extensive understanding of data connectivity, we have built a reputation for delivering high-quality, cost-effective products and solutions that cater to our customers' needs.

AFL Hyperscale - The World, Connected.

www.aflhyperscale.com

Assemblies

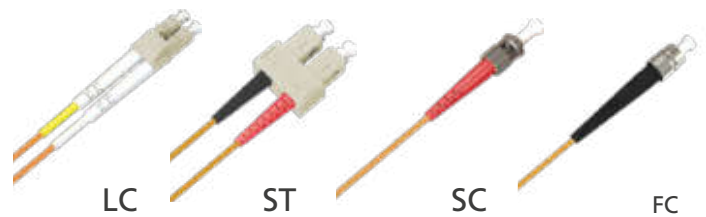
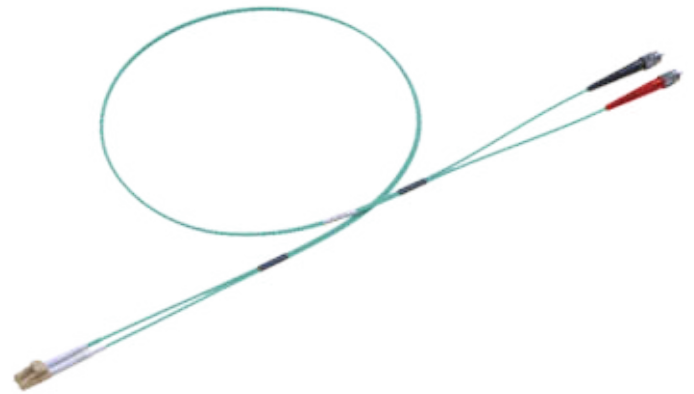
Patch Cords



Our Standard range of patch cords provides an optimized and cost-effective solution for most applications including enterprise, LAN, and datacom. Providing flexible interconnection to active equipment, passive optical devices, and cross-connects, the patch cords are terminated with our optimized range of physical contact (single-mode and multimode) zirconia ceramic ferrule connectors, manufactured with precision factory mounting and polishing techniques to help assure high transmission quality.

Features and Benefits

- Exceed IEC performance requirements
- Available in different fiber types (SM – G652D, MM – OM1, OM2, OM3, OM4)
- Available with different connector types (LC, FC, SC, ST)
- Provided in multipacks of 10 patch cords in standard lengths
- Standard cable dimensions are 2 mm (LC) and 3 mm (FC, SC, ST)
- REACH and SvHC compliant
- Materials compliant to RoHS (2011/65/EU)



Technical Specifications

Optical Performance	Single-Mode	Multimode	Conformance
IL (Maximum - Factory Tested)	0.30 dB	0.30 dB	IEC 61300-3-4
Average/Random	0.30 dB	0.25 dB	IEC 61300-3-34
Return Loss (Minimum)	50 dB	20 dB	IEC 61300-3-6

Characteristics	Units	Simplex	Duplex (Zip Design)
Cable Material		LSZH	LSZH
Strength Member		Aramid	Aramid
Crush	N	1000	1000
Operating Temperature	°C	-20 to +60	-20 to +60
Minimum Bending Radius	mm	10D (installed) 20D (loaded)	10D (installed) 20D (loaded)

Ordering Information

Note: to specify the length, replace the "XX" in the part number with .5, 01, 02, 03, 05, 10, 15, 20, or 25 in meters

Single-Mode 9/125 OS1/2 2mm Simplex LSZH Yellow

Description	Part Number
FC/UPC - LC/UPC	FCFC09SYE3MM0XX-S3
LC/UPC - LC/UPC	LCLC09SYE2MM0XX-S3
LC/UPC - SC/UPC	LCSC09SYE2MM0XX-S3
LC/UPC - ST/UPC	LCST09SYE2MM0XX-S3
LC/APC - LC/APC	LCALCA09SYE2MM0XX-S3
LC/APC - SC/APC	LCASCA09SYE2MM0XX-S3

Single-Mode 9/125 OS1/2 3mm Simplex LSZH Yellow

Description	Part Number
FC/UPC - SC/UPC	FCSC09SYE3MM0XX-S3
FC/UPC - ST/UPC	FCST09SYE3MM0XX-S3
SC/UPC - SC/UPC	SCSC09SYE3MM0XX-S3
SC/UPC - ST/UPC	SCST09SYE3MM0XX-S3
ST/UPC - ST/UPC	STST09SYE3MM0XX-S3
SC/APC - SC/APC	SCASCA09SYE3MM0XX-S3

Multimode 62.5/125 OM1 2mm Duplex LSZH Orange

Description	Part Number
LC/PC - LC/PC	LCLCOM1DOR2MM0XX-S3
LC/PC - SC/PC	LCSCOM1DOR2MM0XX-S3
LC/PC - ST/PC	LCSTOM1DOR2MM0XX-S3

Multimode 50/125 OM2 2mm Duplex LSZH Orange

Description	Part Number
LC/PC - LC/PC	LCLCOM2DOR2MM0XX-S3
LC/PC - SC/PC	LCSCOM2DOR2MM0XX-S3
LC/PC - ST/PC	LCSTOM2DOR2MM0XX-S3

Multimode 50/125 OM3 2mm Duplex LSZH Aqua

Description	Part Number
LC/PC - LC/PC	LCLCOM3DAQ2MM0XX-S3
LC/PC - SC/PC	LCSCOM3DAQ2MM0XX-S3
LC/PC - ST/PC	LCSTOM3DAQ2MM0XX-S3

Multimode 50/125 OM4 2mm Duplex LSZH Erika Violet

Description	Part Number
LC/PC - LC/PC	LCLCOM4DEV2MM0XX-S3
LC/PC - SC/PC	LCSCOM4DEV2MM0XX-S3
LC/PC - ST/PC	LCSTOM4DEV2MM0XX-S3

Single-Mode 9/125 OS1/2 2mm Duplex LSZH Yellow

Description	Part Number
FC/UPC - LC/UPC	FCLC09DYE2MM0XX-S3
LC/UPC - LC/UPC	LCLC09DYE2MM0XX-S3
LC/UPC - SC/UPC	LCSC09DYE2MM0XX-S3
LC/UPC - ST/UPC	LCST09DYE2MM0XX-S3
LC/APC - LC/APC	LCALCA09DYE2MM0XX-S3
LC/APC - SC/APC	LCASCA09DYE2MM0XX-S3

Single-Mode 9/125 OS1/2 3mm Duplex LSZH Yellow

Description	Part Number
FC/UPC - FC/UPC	FCFC09DYE3MM0XX-S3
FC/UPC - SC/UPC	FCSC09DYE3MM0XX-S3
FC/UPC - ST/UPC	FCST09DYE3MM0XX-S3
SC/UPC - SC/UPC	SCSC09DYE3MM0XX-S3
SC/UPC - ST/UPC	SCST09DYE3MM0XX-S3
ST/UPC - ST/UPC	STST09DYE3MM0XX-S3
SC/APC - SC/APC	SCASCA09DYE3MM0XX-S3

Multimode 62.5/125 OM1 3mm Duplex LSZH Orange

Description	Part Number
SC/PC - SC/PC	SCSCOM1DOR3MM0XX-S3
SC/PC - ST/PC	SCSTOM1DOR3MM0XX-S3
ST/PC - ST/PC	STSTOM1DOR3MM0XX-S3

Multimode 50/125 OM2 3mm Duplex LSZH Orange

Description	Part Number
SC/PC - SC/PC	SCSCOM2DOR3MM0XX-S3
SC/PC - ST/PC	SCSTOM2DOR3MM0XX-S3
ST/PC - ST/PC	STSTOM2DOR3MM0XX-S3

Multimode 50/125 OM3 3mm Duplex LSZH Aqua

Description	Part Number
SC/PC - SC/PC	SCSCOM3DAQ3MM0XX-S3
SC/PC - ST/PC	SCSTOM3DAQ3MM0XX-S3
ST/PC - ST/PC	STSTOM3DAQ3MM0XX-S3

Multimode 50/125 OM4 3mm Duplex LSZH Erika Violet

Description	Part Number
SC/PC - SC/PC	SCSCOM4DEV3MM0XX-S3
SC/PC - ST/PC	SCSTOM4DEV3MM0XX-S3
ST/PC - ST/PC	STSTOM4DEV3MM0XX-S3

Assemblies

Standard Pigtails



Our standard range of pigtails provides an optimized and cost-effective solution for most applications including enterprise, LAN, and datacom. The pigtails feature 900 μm buffered fiber for ease of handling in fiber management such as panels, splice cassettes, and wall boxes. They are terminated with our optimized range of physical contact (single-mode and multimode) zirconia ceramic ferrule connectors, manufactured with precision factory mounting and polishing techniques to help assure high transmission quality.



Features and Benefits

- 0.30dB insertion loss
- Available in selected fiber types
- Available in selected connector options
- Available in 900 μm easy-strip or tight buffer LSZH jacket material
- Compliant with REACH and SvHC
- Available as single pigtails or packs of 12 colors per IEC 60304

Technical Specifications

Optical Performance	Single-Mode	Multimode	Conformance
IL (Maximum - Factory Tested)	0.30 dB	0.30 dB	IEC 61300-3-4
Average/Random	0.30 dB	0.25 dB	IEC 61300-3-34
Return Loss (Minimum)	50 dB	20 dB	IEC 61300-3-6

Characteristics	Units	Simplex
Crush	N/100mm	500
Operating Temperature	$^{\circ}\text{C}$	-20 to +60
Stripping Length – Easy-Strip	M	1.5 minimum
Stripping Length – Tight Buffer	mm	30 nominal
Nominal Buffer Diameter	μm	900 \pm 50
Maximum Tensile Load	N	6

Ordering Information

Note: to specify the length, replace the "X" in the part number with 1 or 2, for 1 or 2 meter assemblies

Tight Buffered

Single-Mode OS1/OS2 900µm LSZH

Description	Part Number
FC	FC09B00X-S3
LC	LC09B00X-S3
SC	SC09B00X-S3
ST	ST09B00X-S3
LC/APC	LCA09B00X-S3
SC/APC	SCA09B00X-S3

Multimode OM1 900µm LSZH

Description	Part Number
LC	LCOM1B00X-S3
SC	SCOM1B00X-S3
ST	STOM1B00X-S3

Multimode OM2 900µm LSZH

Description	Part Number
LC	LCOM2B00X-S3
SC	SCOM2B00X-S3
ST	STOM2B00X-S3

Multimode OM3 900µm LSZH

Description	Part Number
LC	LCOM3B00X-S3
SC	SCOM3B00X-S3
ST	STOM3B00X-S3

Multimode OM4 900µm LSZH

Description	Part Number
LC	LCOM4B00X-S3
SC	SCOM4B00X-S3
ST	STOM4B00X-S3

Easy-Strip

Single-Mode OS1/OS2 12 colors in one bag

Description	Part Number
FC	FC09B002E-12/1B-S3
LC	LC09B002E-12/1B-S3
SC	SC09B002E-12/1B-S3
ST	ST09B002E-12/1B-S3
LC/APC	LCA09B002E-12/1B-S3
SC/APC	SCA09B002E-12/1B-S3

Multimode OM1 12 colors in one bag

Description	Part Number
LC	LCOM1B002E-12/1B-S3
SC	SCOM1B002E-12/1B-S3
ST	STOM1B002E-12/1B-S3

Multimode OM2 12 colors in one bag

Description	Part Number
LC	LCOM2B002E-12/1B-S3
SC	SCOM2B002E-12/1B-S3
ST	STOM2B002E-12/1B-S3

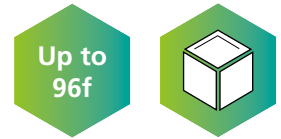
Multimode OM3 12 colors in one bag

Description	Part Number
LC	LCOM3B002E-12/1B-S3
SC	SCOM3B002E-12/1B-S3
ST	STOM3B002E-12/1B-S3

Multimode OM4 900µm LSZH

Description	Part Number
LC	LCOM4B002E-12/1B-S3
SC	SCOM4B002E-12/1B-S3
ST	STOM4B002E-12/1B-S3

Protection and Management



1RU Sliding Patch Panel

- Up to 48 fibers in 1RU
- Available with 12-position SC Duplex, 24-position SC Duplex, 24-position ST/FC, or 24-position SC/LC/E2000 adapter options
- Supplied either unloaded or loaded with adapters of choice
- 19" rack-mountable
- 45° open working angle
- Available in black or gray
- Optional post-style splice cassette mounting system
- Accepts loose tube, distribution, and pre-terminated cables
- Removable plate at the rear of the panel allows the installation of steel tape armored cable
- Individually labeled ports
- Materials compliant to RoHS2 and REACH/SvHC



Adapter Type

LC, LCA, SC, SC Duplex, SCA, ST, FC, FCA, E2000, E2000A

Ordering Information

S01 ST/FC 1RU Sliding Patch Panel - up to 24 ports, maximum 24f

Description	Part Number
Unloaded	S01XXX00-UB

To specify the adapter count for loaded panels, replace the "XX" in the part number with 12 or 24

Description	Part Number	Description	Part Number
FC Multimode	S01FCMXX-UB	ST Multimode	S01STMXX-UB
FC Single-Mode	S01FCSXX-UB	ST Single-Mode	S01STSXX-UB
FCA Single-Mode	S01FCAXX-UB		

S03 SC Simplex/LC Duplex/E2000 1RU Sliding Patch Panel - up to 24 ports, maximum 48f

Description	Part Number
Unloaded	S03XXX00-UB

To specify the adapter count for loaded panels, replace the "XX" in the part number with 12 or 24

Description	Part Number	Description	Part Number
SC Simplex Multimode	S03SCMXX-UB	LC Duplex Multimode	S03LCMXX-UB
SC Simplex Single-Mode	S03SCSXX-UB	LC Duplex Single-Mode	S03LCSXX-UB
SCA Simplex Single-Mode	S03SCAXX-UB	LCA Duplex Single-Mode	S03LCAXX-UB
E2000 Single-Mode	S03E2AXX-UB		

S04 SC Simplex/LC Duplex 1RU Sliding Patch Panel (Grey) - up to 24 ports, maximum 48f

Description	Part Number
Unloaded	S04XXX00-UB

To specify the adapter count for loaded panels, the "XX" in the part number with 12 or 24

Description	Part Number
SC Simplex Multimode	S04SCMXX-UB
SC Simplex Single-Mode	S04SCSXX-UB
SCA Simplex Single-Mode	S04SCAXX-UB

Description	Part Number
LC Duplex Multimode	S04LCMXX-UB
LC Duplex Single-Mode	S04LCSXX-UB

S07 SC Duplex/LC Quad 1RU Sliding Patch Panel - up to 12 ports, maximum 48f

Description	Part Number
Unloaded	S07XXX00-UB

To specify the adapter count for loaded panels, replace the "XX" in the part number with 6 or 12

Description	Part Number
SC Duplex Multimode	S07SCMXX-UB
SC Duplex Single-Mode	S07SCSXX-UB
SCA Duplex Single-Mode	S07SCAXX-UB

Description	Part Number
LC Quad Multimode	S07LQMXX-UB
LCA Quad Single-Mode	S07LQAXX-UB

S09 SC Duplex/LC Quad 1RU Sliding Patch Panel - up to 24 ports, maximum 96f

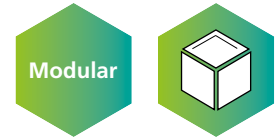
Description	Part Number
Unloaded	S09XXX00-UB

To specify the adapter count for loaded panels, replace the "XX" in the part number with 12 or 24

Description	Part Number
SC Duplex Multimode	S09SCMXX-UB
SC Duplex Single-Mode	S09SCSXX-UB
SCA Duplex Single-Mode	S09SCAXX-UB

Description	Part Number
LC Quad Multimode	S09LQMXX-UB
LC Quad Single-Mode	S09LQSXX-UB
LCA Quad Single-Mode	S09LQAXX-UB

Sliding 1RU Patch Panel Chassis



- Up to 96 fibers in 1RU
- Available with many modular front plate options
- Supplied front plates can be supplied either unloaded or loaded with adapters of choice
- 19" rack-mountable
- 45° open working angle
- Available in black or gray
- Accepts loose tube, distribution, and pre-terminated cables
- Removable plate at the rear of the panel allows the installation of steel tape armored cable
- Individually labeled ports



Removable Front Plates

See page 10 for Removable Front Plate options

Removable Front Plates

Ordering Information

Description	Part Number
Removable Front Panel Sliding RF Chassis Black (Bracket+Screws) UB	SPANEL-UB

SC Duplex Removable Front Panel 1RU - up to 12 ports, maximum 24f

Description	Part Number
SC Duplex Multimode	RF01SCM12-UB
SC Duplex Single-Mode	RF01SCS12-UB

Description	Part Number
SCA Duplex Single-Mode	RF01SCA12-UB
Unloaded	RF01XXX00-UB

FC/ST Removable Front Panel 1RU - up to 24 ports, maximum 24f

Description	Part Number
Unloaded	RF02XXX00-UB

To specify the adapter count for loaded panels, replace the "XX" in the part number with 12 or 24

Description	Part Number	Description	Part Number
FC Single-Mode	RF02FCSXX-UB	ST Multimode	RF02STMXX-UB
FCA Single-Mode	RF02FCA24-UB	ST Single-Mode	RF02STSXX-UB

E2000 Removable Front Panel 1RU - up to 24 ports, maximum 24f

Description	Part Number
Unloaded	RF03XXX00-UB

To specify the adapter count for loaded panels, replace the "XX" in the part number with 12 or 24

Description	Part Number	Description	Part Number
E2000 Multimode	RF03E2MXX-UB	E2000A Single-Mode	RF03E2AXX-UB
E2000 Single-Mode	RF03E2SXX-UB		

SC Simplex/LC Duplex Removable Front Panel 1RU - up to 24 ports, maximum 48f

To specify the adapter count for loaded panels, replace the "XX" in the part number with 12 or 24

Description	Part Number	Description	Part Number
LC Duplex Multimode	RF03LCMXX-UB	SC Simplex Multimode	RF03SCMXX-UB
LC Duplex Single-Mode	RF03LCSXX-UB	SC Simplex Single-Mode	RF03SCSXX-UB
LCA Duplex Multimode	RF03LCAXX-UB	SCA Simplex Single-Mode	RF03SCAXX-UB

SC Duplex/LC Quad Removable Front Panel 1RU - up to 24 ports, maximum 96f

Description	Part Number
Unloaded	RF05XXX00-UB

To specify the adapter count for loaded panels, replace the "XX" in the part number with 12 or 24

Description	Part Number	Description	Part Number
LC Quad Multimode	RF05LQMXX-UB	SC Duplex Multimode	RF05SCMXX-UB
LC Quad Single-Mode	RF05LQSXX-UB	SC Duplex Single-Mode	RF05SCSXX-UB
LCA Duplex Multimode	RF03LCAXX-UB	SCA Duplex Single-Mode	RF05SCAXX-UB

LGX 3RU Fixed Housing

Fixed and rack-mountable, the LGX 3RU Housing has been designed to accept up to 14 LGX MPO Cassettes or Splice Cassettes. This flexible, multi-functional solution gives the end-user easy access during installation or maintenance without disturbing existing cable or fibers.

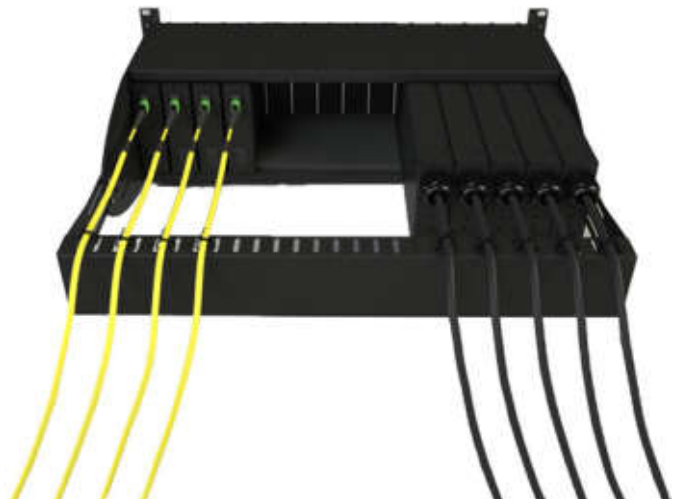
In addition to an array of adapters, the housing also offers multiple cable entry solutions:

- MPO trunk cables connected to 14 individual LGX 12f/24f MPO cassettes
- Loose tube cable connected to 14 individual extended LGX cassettes to allow standard splicing
- 14 LGX cassettes for pre-terminated applications

The versatility of the LGX 3RU Housing makes it one of the most flexible solutions on the market.

Features and Benefits

- Up to 14 x 24f LGX cassettes with multiple adapter options available
- Fits standard 19" rack
- Fully integrated fiber management, rear cable management bar as standard
- 30mm bend radius maintained throughout
- Accepts loose tube, distribution cable, and MPO trunk cables
- Individually labeled ports
- Splicing option available
- Patch cord exit retrofit cable management available
- Materials are RoHS, REACH, and SVHC compliant

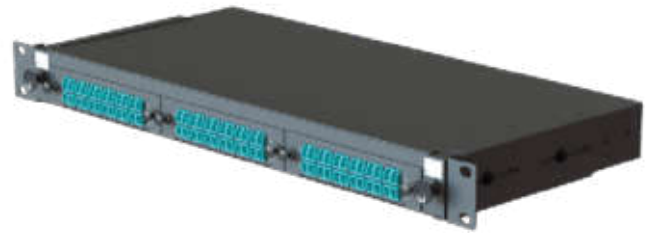


Ordering Information

Description	Part Number
LGX Chassis 3RU Panel for 14 LGX Cassettes	LGXCHASSIS-UB

LGX S13 1RU Sliding Patch Panel

- Up to 3 LGX MPO cassettes in 1RU
- Fits standard 19" rack
- Multiple adapter options available
- Accepts loose tube, distribution, and pre-terminated cables
- Individually labeled ports
- 45° open working angle
- Materials are RoHS, REACH, and SVHC compliant



Ordering Information

Description	Part Number
LGX Sliding Panel Black 1RU 3 Port UNLOADED	S13XXX00-UB

LGX F19 1RU Fixed Patch Panel

- Up to 3 LGX MPO or Splice Cassettes in 1RU
- Fits standard 19"
- Multiple adapter options available
- Accepts loose tube, distribution, and pre-terminated cables
- Individually labeled ports
- Materials are RoHS, REACH, and SVHC compliant



Ordering Information

Description	Part Number
Fixed Panel Black 9005 1RU LGX 3 Port Unloaded	F19XXX00-UB

LGX Wall Boxes



- Houses up to 4 LGX Adapter Plates
- Wall-mountable
- Accepts loose tube cable, distribution cable, and pre-terminated pigtails (dependent on wall box variant)
- Multiple adapter options available
- Splicing option available
- Multiple fixing points
- Hinged door
- Materials are RoHS, REACH, and SVHC compliant

Adapter Type

See page 14 for L-Series Adapter Plate options

Ordering Information

Description	Part number
LGX Wall Box Black for 1 LGX Adapter Plate Unloaded	AMW1-UB
LGX Wall Box Black for 2 LGX Adapter Plates Unloaded	AMW2-UB
LGX Wall Box Black for 4 LGX Adapter Plates Unloaded	AMW4-UB

LGX MPO Cassette



- MPO IEC 61754 standards-compliant multi-fiber connector
- LC (SFF data center standard), SC discrete interface
- OS1/2, OM3, OM4 cabled fiber grades (OM1 and OM2 available)
- 12 and 24 fiber versions – 12 LC (Duplex)
- 12 fiber version – SC (Simplex)
- Polarity A (standard), B, or C
- Factory-terminated and tested
- High-performance zirconia sleeve adapters

Adapter Type Fiber Type

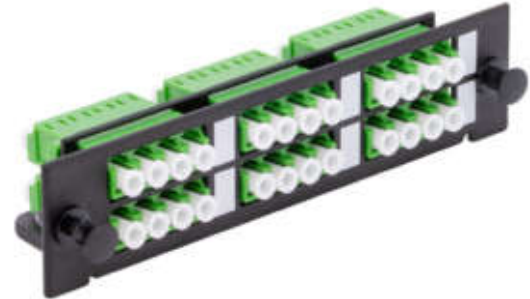
LC, LCA, SC, SCA	OM3 50/125	OM4 50/125	OS1/2 G657 A1 G657 A2
---------------------	---------------	---------------	-----------------------------

Ordering Information

Description	Part Number
LGX Mod MPO Prem (M)- LC Prem 24F MM OM4 50/125 Pol A/C	MPM24LCMMCASS-UB
LGX Mod MPO Prem (M)- LCA Prem 24F SM 9/125 G.657A1 Pol A/C	MPM24LCASMCASS-UB
LGX Mod MPO Prem (M)- LC Prem 24F SM 9/125 G.657A1 Pol A/C	MPM24LCSMCASS-UB
LGX Mod MPO (M)- LC 12F SM 9/125 G.657A1 Pol A/C	MM12LCSMCASS-UB
LGX Mod MPO (M)- LCA 12F SM 9/125 G.657A1 Pol A/C	MM12LCASMCASS-UB
LGX Mod MPO (M)- LC 12F MM OM4 50/125 Pol A/C	MM12LCMMCASS-UB
LGX Mod MPO (M)- SC 12F SM 9/125 G.657A1 Pol A/C	MM12SCSMCASS-UB
LGX Mod MPO (M)- SCA 12F SM 9/125 G.657A1 Pol A/C	MM12SCASMCASS-UB
LGX Mod MPO (M)- SC 12F MM OM4 50/125 Pol A/C	MM12SCMMCASS-UB

LGX Adapter Plate

- For use in all compatible LGX housings, panels, and wall boxes
- Suitable for SC, LC, ST, FC & E2000 adapters
- Interchangeable for a wide range of products
- Easy to install with either fastening pips or screw-in
- Ranges from low- to high-density fiber counts
- Robust steel design
- Supplied with adapters pre-loaded



Adapter Type

LC, LCA, ST, FC, FCA, SC, SCA, E2000, E2000A, MPO

Ordering Information

L01 LC Duplex/SC Simplex/E2000/ MTRJ - up to 8 ports, maximum 24f

Description	Part Number
LC Duplex Multimode	L01LCM08-UB
LC Duplex Single-Mode	L01LCS08-UB
LCA Duplex Single-Mode	L01LCA08-UB
SC Simplex Multimode	L01SCM08-UB
SC Simplex Single-Mode	L01SCS08-UB

Description	Part Number
SCA Simplex Single-Mode	L01SCA08-UB
E2000 Multimode	L01E2M08-UB
E2000 Single-Mode	L01E2S08-UB
E2000A	L01E2A08-UB
MTRJ Multimode	L01MTM08-UB

L02 FC/ST - up to 8 ports

Description	Part Number
FC Multimode	L02FCM08-UB
FC Single-Mode	L02FCS08-UB
FCA Single Mode	L02FCA08-UB

Description	Part Number
ST Multimode	L02STM08-UB
ST Single-Mode	L02STS08-UB

L03 LC Quad/SC Duplex - up to 6 ports, maximum 24f

Description	Part Number
LC Quad Multimode	L03LQM06/AQ-UB
LC Quad Single-Mode	L03LQS06-UB
LCA Quad Single-Mode	L03LQA06-UB

Description	Part Number
SC Duplex Multimode	L03SCM06-UB
SC Duplex Single-Mode	L03SCS06-UB
SCA Duplex Single-Mode	L03SCA06-UB

L06 MPO - up to 8 ports, maximum 24f

Description	Part Number
MPO	L06MPO08-UB

Blank Plate

Description	Part Number
Blank Plate	L04-UB

Blank Panels



- 1RU, 2RU, 3RU
- 19" rack-mountable

Ordering Information

Note: add "/G" after part number for gray panel

Description	Part Number
Blanking Plate 1RU 19" Black	1UBLANK-UB
Blanking Plate 2RU 19" Black	2UBLANK-UB
Blanking Plate 3RU 19" Black	3UBLANK-UB



Cable Bars



- 1RU/2RU
- 19" rack-mountable
- Available with hooks or hoops
- Integrated brush strip options

Ordering Information

Description	Part Number
1RU Cable Bar Black 19" 4 Hoop Metal	1UCABLEBAR-UB
1RU Cable Bar Grey 7035 19" 4 Hoop Metal	1UCABLEBAR/G-UB
1RU Cable Bar Black 19" with 6 Grey 7015 removable 58mm hooks	1UCABLEBAR/PL01-UB
1RU Cable Bar with 87mm Detachable Hooks	1UCABLEBAR/PL04-UB
2RU Cable Bar Black 19" with 74mm Hooks	2UCABLEBAR-UB
2RU Cable Bar with Grey 7015 58mm Detachable Hooks	2UCABLEBAR/PL01-UB
2RU Cable Bar Black with Grey 7015 Hooks and Spools	2UCABLEBAR/PL04-UB



1RU Brush Strip

- 1RU
- 19" rack-mountable
- Integrated brush strip
- Will fit any 19" rack
- Pass patch cords to the rear of cabinets without affecting airflow



Ordering Information

Description	Part Number
Brush Strip Black 19" 3 pass through slots	1UBRUSHSTRIP03-UB
1RU Cable Bar Black 19" 4x74mm Hoop with Brush	1UCABLEBAR/BR-UB
1RU Cable Bar Black 19" Recessed 4x74mm Hoops with Brush	1UCABLEBAR/REC-UB
1RU Cable Bar Grey 19" Recessed 4x74mm Hoops with Brush	1UCABLEBAR/REC/G-UB

Wall Boxes

W31 Indoor/Outdoor Lockable Wall Box



- IP 65 rating for external use
- Lockable door for added security
- Integrated cable tie points for securing incoming cable
- Up to 24 splice and SC connection points
- Removable splice tray for easy installation
- Accepts loose tube, distribution, and pre-terminated cables
- Sealing glands for up to 24 exiting cables and 2 incoming cables
- Cable entry point allows unbroken cable to be installed (loop)
- Removable door for ease of installation
- Supplied with 24 heatshrink splice protectors
- Supplied with transit tubing
- Supplied with wall fixings and tie wraps
- Materials ROHS, REACH, and SvHC compliant



Adapter Type
SC, SC Duplex, LC Duplex, LC Quad

Ordering Information

Description	Part Number
SC Simplex Multimode	W31SCS24-UB
SC Simplex Single-Mode	W31SCM24-UB
SCA Simplex Single-Mode	W31SCA24-UB

Description	Part Number
LC Duplex Multimode	W31LCM12-UB
LC Duplex Single-Mode	W31LCS12-UB
Unloaded	W31XXX00-UB

W23 Indoor/Outdoor Distribution Box

- Up to 8 fibers
- Removable splice tray for easy installation
- Multiple adapter options available
- 8 adapter positions
- IP 65 rating for external use
- Accepts loose tube, distribution, and pre-terminated cables
- Sealing glands for up to 8 exiting cables and 1 incoming cable
- Removable cover for ease of installation
- Materials ROHS, REACH, and SvHC compliant
- Supplied with 12 heatshrink splice protectors
- Supplied with transit tubing
- Supplied with wall fixings and tie wraps



Ordering Information

Description	Part Number
SC Simplex Multimode	W23SCM08-UB
SC Simplex Single-Mode	W23SCS08-UB
SCA Simplex Single-Mode	W23SCA08-UB

Description	Part Number
LC Duplex Multimode	W23LCM04-UB
LC Duplex Single-Mode	W23LCS04-UB
Unloaded	W23XXX00-UB

W24 Indoor/Outdoor Distribution Box

- Up to 24 fibers
- Removable splice tray for easy installation
- Multiple adapter options available
- 6 adapter positions
- IP 65 rating for external use
- Accepts loose tube, distribution, and pre-terminated cables
- Integrated bend radius protection
- Sealing glands for up to 24 exiting cables and 1 incoming cable
- Lockable door with the same key for all wall boxes
- Removable door for ease of installation
- Materials are ROHS, REACH, and SvHC compliant
- Supplied with 24 heatshrink splice protectors
- Supplied with transit tubing
- Supplied with wall fixings and tie wraps



Ordering Information

Description	Part Number
SC Duplex Multimode	W24SCM06-UB
SC Duplex Single-Mode	W24SCS06-UB
SCA Duplex Single-Mode	W24SCA06-UB

Description	Part Number
LC Quad Multimode	W24LQM06-UB
LC Quad Single-Mode	W24LQS06-UB
Unloaded	W24XXX00-UB

W35 Indoor/Outdoor Lockable Wall Box

- IP 65 rating for external use
- Lockable door for added security
- Integrated cable tie points for securing incoming cable
- Up to 12 splice SC Simplex or LC Duplex connection points
- Removable splice tray for easy installation
- Accepts loose tube, distribution, and pre-terminated cables
- Integrated bend radius protection
- Sealing glands for up to 12 exiting cables and 2 x 6.5mm-13mm incoming cables
- Removable door for ease of installation
- Supplied with 12 heatshrink splice protectors
- Supplied with transit tubing
- Supplied with wall fixings and tie wraps
- Materials are ROHS, REACH, and SvHC compliant



Ordering Information

Description	Part Number
SC Simplex Multimode	W35SCM12-UB
SC Simplex Single-Mode	W35SCS12-UB
SCA Simplex Single-Mode	W35SCA12-UB
LC Duplex Multimode	W35LCM12-UB

Description	Part Number
LC Duplex Single-Mode	W35LCS12-UB
LCA Duplex Single-Mode	W35LCA12-UB
Unloaded	W35XXX00-UB

W37 IP65 Indoor/Outdoor Distribution Box

- Up to 4 fibers
- Removable/hinged splice tray for easy installation
- Multiple adapter options available
- 4 adapter positions
- IP 65 rating for external use
- Accepts loose tube, distribution, and pre-terminated cables
- Sealing glands for up to 4 exiting cables and 1 incoming cable
- Materials are ROHS, REACH, and SvHC compliant
- Supplied with 4 heatshrink splice protectors
- Supplied with wall fixings



Adapter Type
SC, SC Duplex, LC Duplex, LC Quad

Ordering Information

Description	Part Number
IP Rated Wall Box IP65 Indoor/Outdoor 4 Port (SCS) White UNLOADED UB	W37XXX00-UB

Din Rail Demarcation Box

- Din rail mounting
- Wall-mountable
- Top and bottom cable entry points (1 cable gland included)
- Strength member tie position x 1
- 2x splice holders each for 12 splice protectors or metal crimp splice protectors
- Suitable for pre-terminated cables, splicing, or pass through
- IP 20 rating



Ordering Information

Description	Part Number
SC Simplex Multimode	DSP03SCM12-UB
SC Simplex Single-Mode	DSP03SCS12-UB
SCA Simplex Single-Mode	DSP03SCA12-UB
LC Duplex Multimode	DSP03LCM12-UB

Description	Part Number
LC Duplex Single-Mode	DSP03LCS12-UB
LCA Duplex Single-Mode	DSP03LCA06-UB
Unloaded	DSP03XXX00-UB

Outside Enclosures

OSP Splice Box Compact Closure

- All-in-one construction
- Compact and lightweight
- Acid and alkaline resistant
- Airtight and waterproof
- Simple installation
- Wall-mountable
- Ideal for cable repair work
- Environmentally-friendly
- IP 68 rated up to 1.5 m water depth



Ordering Information

Description	Part Number
OSP Splice Box Black 9005 Compact Closure 4 port gland entry 2x12 trays Unloaded	24SPICEBOX-UB

Inline Enclosure



- Holds 24 to 192 splices
- Easy to re-enter
- 3 cable entry positions at each end
- Termination and splice kit included
- Integrated seal, airtight, and waterproof
- Ideal for cable repair
- Materials ROHS compliant
- Can be used in through, branch, or mid-span splice locations
- Suitable for aerial, underground duct, or direct burial applications
- IP 68 rated up to 1.5 m water depth



Ordering Information

Description	Part Number
OSP Inline Closure for 24 Splice Black UB	INLINE01-UB
OSP Inline Closure for 48 Splice Black UB	INLINE02-UB
OSP Inline Closure for 72 Splice Black UB	INLINE03-UB
OSP Inline Closure for 144 Splice Black UB	INLINE04-UB

Dome Enclosures 01-04

- Up to 144 fibers
- Easy to re-enter
- Multiple cable entry/exit options
- Integrated pressure valve
- Termination and splice kit included
- Integrated seal, airtight, and waterproof
- Ideal for cable repair
- Materials ROHS compliant
- Can be used in through, branch, or mid-span splice locations
- Suitable for aerial, underground duct, or manhole applications
- IP 68 up to 1.5 m water depth



Ordering Information

Description	Part Number
OSP Dome 48F Heat Shrink Dome Black UB	DOMEO1-UB
OSP Dome 72F Heat Shrink Dome Black UB	DOMEO2-UB
OSP Dome 96F Heat Shrink Dome Black UB	DOMEO3-UB
OSP Dome 144F Heat Shrink Dome Black UB	DOMEO4-UB

Dome Enclosures 05-09

- Opens via left-hand hinge
- Multiple cable entry points
- Integrated pressure valve
- Integrated earth point
- Holds up to 60 single fibers
- Integrated fiber management
- Mechanically sealed (compression)
- Multi-functional splicing options
- Includes all splice protection
- Includes wall mounting bracket and fixings
- Can be pole-mounted (optional extra)
- Can be aerial-mounted (optional extra)
- IP 68 up to 1.5 m water depth



Ordering Information

Description	Part Number
OSP Dome Hinged Closure 12 Splice Black UB	DOME05-UB
OSP Dome Hinged Closure 24 Splice Black UB	DOME06-UB
OSP Dome Hinged Closure 36 Splice Black UB	DOME07-UB
OSP Dome Hinged Closure 48 Splice Black UB	DOME08-UB
OSP Dome Hinged Closure 60 Splice Black UB	DOME09-UB

Accessories

Cable Management Kit

- 1x self-adhesive splice bridge
- 1x safety sticker
- 8x self-adhesive bunny clips
- 1x cable gland (13.5mm)



Ordering Information

Description	Part Number
Accessory Cable Management Kit - includes Gland, Splice Bridge, Bunny Clips, W'label UB	CABLEMANAGEMENT-UB

Splice Cassette with Clear Lid

This tray provides a low-cost solution for protecting and managing splices within a patch panel. The kit includes a splice holder, tray, and lid.



Ordering Information

Description	Part Number
Fiber Splice Tray Stackable with Clear Lid (2x6 way) UB	SPLICE12BASEUNIT-UB

Optical Fiber Fusion Splice Protectors

- Components; heat shrinkable outer tube, hot melt fusion tube, and stainless steel strength rod
- Maintains optical properties of fiber
- Provides strength and protection to optical fiber splices
- Easy to use and install without damaging splice
- Clear sleeve to allow visual location of splice prior to shrinking
- Sealant protects splice



Ordering Information

Description	Part Number
Fiber Splice Protector Clear 45mm dia 2.5mm 100/pk UB	SPLICE45CLEAR-UB
Fiber Splice Protector Clear 60mm dia 2.5mm 100/pk UB	SPLICE60CLEAR-UB

Splice Tray Hinge

Using a hinge with a splice tray allows access to stacked splice trays without disturbing surrounding fibers.



Ordering Information

Description	Part Number
Fiber Splice Tray Buckle Hinge Black UB	SPLICECASSETTE12-UB

Front-Mounted Quick Nut

Inserting a panel into a rack is made easy by using a cage nut. The captive nut is clipped into the rack, then the screw is easily inserted as there is no need to hold the nut.



Ordering Information

Description	Part Number
Accessory Cage Nuts, Washers & Screws - CAGE11 CN50 - Pack of 50 (flat/square) 178-45D	178-45D

Media Converters

Unmanaged Media Converter Chassis

- Cross-flow cooling fan built-in
- 14-slots chassis: 10/100M or 10/100/1000M stand-alone external power supply media converters



Ordering Information

Note: "XX" represents power supply options - can be UK, US, AU, EU

Description	Part Number
14 Slots Media Connector Chassis	MCC-14XX

Ethernet Fiber Media Converter 10/100 Mbps

- Auto-crossover for MDI/MDIX in TP port
- Auto-negotiation in TP port
- Supports link fault pass-through (LFP) function
- LED display for link/activity, full/half, 10/100M
- Converter mode with auto-change-forward (switch) function



Ordering Information

10/100 Multimode Converter

Note: "XX" represents power supply options - UK, US, AU, EU

Description	Part Number
ST-1300nm- 2KM External	MCF01MST2XXE
ST-1300nm- 2KM Internal	MCF01MST2XXI
SC-1300nm- 2KM External	MCF01MSC2XXE

Description	Part Number
SC-1300nm- 2KM Internal	MCF01MSC2XXI
FC-1300nm- 2KM	MCF01MFC2XXE
LC-1300nm- 2KM	MCF01MLC2XXE

10/100 Single-Mode Converter

Note: the first "XX" represents ST, SC, FC, LC, the second "XX" represents power supply options - UK, US, AU, EU

Description	Part Number
1310nm- 20KM External	MCF01SXX20XXE
1310nm- 40KM External	MCF01SXX40XXE
1310nm- 60KM External	MCF01SXX60XXE

Description	Part Number
1550nm LAZER- 80KM External	MCF01SXX80XXE
1550nm LAZER- 100KM External	MCF01SXX100XXE
1550nm LAZER- 120KM External	MCF01SXX120XXE

10/100 Single-Fiber Converter

Description	Part Number
SC, 20km, Tx1310 /Rx1550nm (A type),	MCF01SSC20XXEWA
SC, 20km, Tx1550 /Rx1310nm (B type)	MCF01SSC20XXEWB
SC, 40km, Tx1310 /Rx1550nm (A type)	MCF01SSC40XXEWA
SC, 40km, Tx1550 /Rx1310nm (B type)	MCF01SSC40XXEWB

Description	Part Number
SC, 60km, Tx1310 /Rx1550nm (A type)	MCF01SSC60XXEWA
SC, 60km, Tx1550 /Rx1310nm (B type) DFB Laser	MCF01SSC60XXEWDMB
SC, 60km, Tx1310 /Rx1550nm (A type),	MCF01SSC60XXEWDMA
SC, 60km, Tx1550 /Rx1310nm (B type), DFB Laser	MCF01SSC60XXEWDMB

Gigabit Media Converter 10/100/1000 Mbps

- Automatic identification of MDI/MDI-X cross line
- 10/100/1000Mbps port with full/half duplex auto-negotiation
- Back pressure flow control for full duplex
- Converter mode with auto-change-forward (switch) function



Ordering Information

Note: "XX" represents power supply options - UK, US, AU, EU.

Gigabit Multimode Converter

Description	Part Number
SC- 850nm-550mtr External	MCF02MSC1XXE
LC- 850nm-550mtr External	MCF02MLC1XXE

Description	Part Number
SC- 1300nm-2KM External	MCF02MSC2XXE
LC- 1300nm-2KM External	MCF02MLC2XXE

Gigabit Single-Mode Converter

Description	Part Number
SC- 1310nm-10KM External	MCF02SSC10XXE
SC- 1310nm-20KM External	MCF02SSC20XXE
LC- 1310nm-20KM External	MCF02SLC20XXE
SC- 1310nm-40KM External	MCF02SSC40XXE

Description	Part Number
LC- 1310nm-40KM External	MCF02SLC40XXE
SC- 1310nm-60KM External	MCF02SSC60XXE
LC- 1310nm-60KM External	MCF02SLC60XXE

Gigabit Single-Fiber Converter

Description	Part Number
SC, 10km, Tx1310nm / Rx1550nm (A type)	MCF02SSC10XXEWA
SC, 10km, Tx1550nm / Rx1310nm (B type)	MCF02SSC10XXEWB
SC, 20km, Tx1310nm / Rx1550nm (A type)	MCF02SSC20XXEWA

Description	Part Number
SC, 20km, Tx1550nm / Rx1310nm (B type)	MCF02SSC20XXEWB
SC, 40km, Tx1310nm / Rx1550nm (A type)	MCF02SSC40XXEWA
SC, 40km, Tx1550nm / Rx1310nm (B type)	MCF02SSC40XXEWB

Multimode to Single-Mode Media Converter

- Extend a Gigabit Ethernet backbone connection up to 80 km for MAN (Metropolitan Area Network) applications
- Converts multimode to single-mode (and vice versa)
- Converts single-mode to single-mode or multimode to multimode
- Increases distance between nodes
- Cross-connects fiber types
- Performs optical repeater function (with 1x9 or SFP transceiver modules)



10/100 MM to SM converter

Note: "XX" represents power supply options - UK, US, AU, EU

Description	Part Number
SC/SC-1310nm 2KM/10NM External	MCF01SCSC210XXE
SC/SC-1310nm 2KM/20NM External	MCF01SCSC220XXE
SC/SC-1310nm 2KM/40NM External	MCF01SCSC240XXE

Gigabit 10/100/1000 MM to SM Converter

Description	Part Number
SC/SC- 850/1310nm 550M/10NM External	MCF02SCSC110XXE
SC/SC- 850/1310nm 550M/20NM External	MCF02SCSC120XXE
SC/SC- 850/1310nm 550M/40NM External	MCF02SCSC140XXE

Description	Part Number
SC/SC-1310nm 2KM/60NM External	MCF01SCSC260XXE
SC/SC-1310nm 2KM/70NM External	MCF01SCSC270XXE
SC/SC-1310nm 2KM/80NM External	MCF01SCSC280XXE

Description	Part Number
SC/SC- 850/1310nm 550M/60NM External	MCF02SCSC160XXE
SC/SC- 850/1310nm 550M/70NM External	MCF02SCSC170XXE
SC/SC- 850/1310nm 550M/80NM External	MCF02SCSC180XXE

